

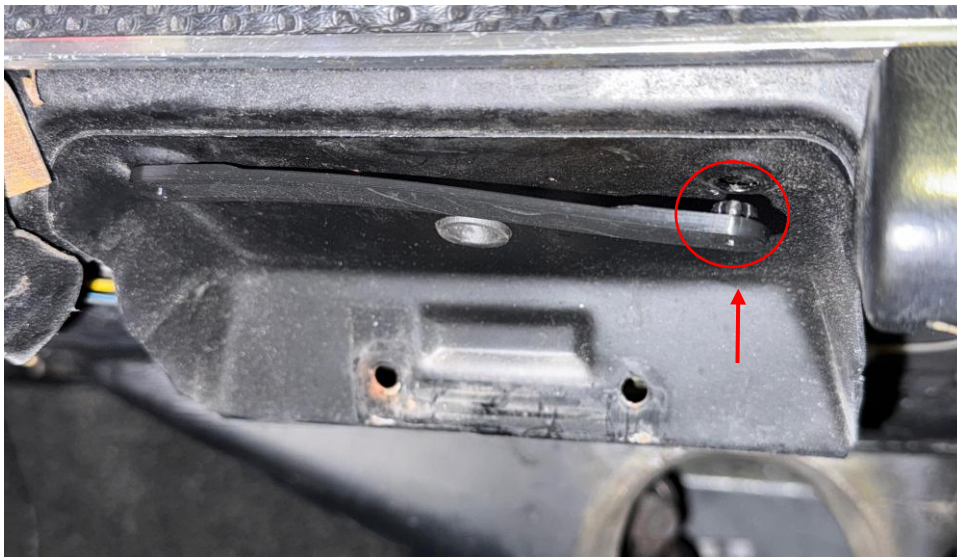
Smartphone holder installation

For F-models and G-models with fold-down ashtray

1. Unscrew the ashtray and remove the knee protection cover
2. Screw the knee protection cover to the new holder (align at the end)
3. Pull the two original rubber buffers out of the holes



4. Press the new rubber holder with the lugs into the holes (the screws expand the lugs and clamp into the hole like a dowel, preventing drilling into the sheet metal)



5. Slide the new holder with the two rear guides into the original screw holes, guiding the cable out of the center at the rear
6. Finally align the holder and screw it into the rubber mount using the enclosed screws and washers (carefully and not too tightly)